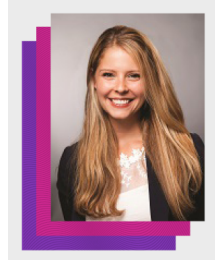


## Keeping you in the know

with Marianne Steger

Edition 2 | 2/18/2022



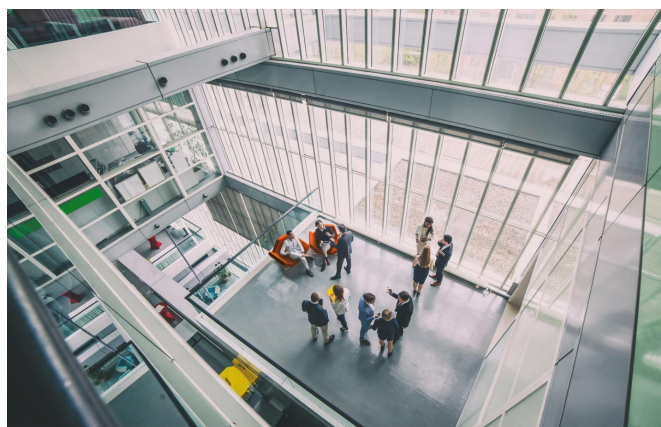
We congratulate Kathleen Porter on her new role within Via Benefits as Director of Strategic Partnerships. Kathleen has nearly 15 years of experience in benefits administration and has worked for WTW since 2014. In her new role, Kathleen will be a valuable resource to our partners as they help their clients provide affordable retiree health care benefits.

Connect with Kathleen by [email](#), on [LinkedIn](#), or by phone at (716) 603-8326 so she can answer your questions about Via Benefits!

To learn more about Via Benefits and the individual marketplace, subscribe to Eye on 65, a podcast for public sector employers concerned about retiree health care, or watch a [replay](#) where special guests join us to discuss topics related to the individual marketplace. As always, feel free to reach out to me by [email](#), on [LinkedIn](#), or by phone at (614) 205-0117.



*Marianne*



### Upcoming Event - SALGBA

Join us May 1 – 4 at the SALGBA annual conference in Seattle! I'll be on the podium speaking about why an individual health plan approach to Pre-Medicare retiree health benefits may be right for your organization. Visit us at our booth or tell us you're coming.

[Visit event site >](#)



### OPEB Solutions

Many public sector employers face high OPEB liabilities but haven't implemented the necessary mitigation strategies to rein in these obligations. This opinion article examines the true costs of ignoring the problem.

[Read article >](#)



#### About Via Benefits

Via Benefits Insurance Services has helped more than two million people evaluate and enroll in individual health insurance. Via Benefits is a resource offering personal service to help retirees understand coverage options through a robust online experience supported by an award-winning customer service team. Founded in 2004, it operates the first and largest Medicare marketplace in the country and, in 2014, expanded to include individual and family plans for Pre-Medicare retirees. Learn more at [optimizeretireebenefits.com](http://optimizeretireebenefits.com).

#### About WTW

At WTW (NASDAQ: WTW), we provide data-driven, insight-led solutions in the areas of people, risk and capital. Leveraging the global view and local expertise of our colleagues serving 140 countries and markets, we help you sharpen your strategy, enhance organizational resilience, motivate your workforce and maximize performance.

Working shoulder to shoulder with you, we uncover opportunities for sustainable success—and provide perspective that moves you.

#### Follow us on social media



Not interested?  
[Don't send me this newsletter >](#)

[Contact Us](#)

[Privacy Policy](#)

[Unsubscribe](#)

WTW, 800 North Glebe Road | Arlington, VA 22203 USA

Copyright WTW 2022. All Rights Reserved.